

NOTE:—

1. TO BE USED FOR CONNECTING NEUTRAL OF CVT AND SURGE COUNTER OF LA



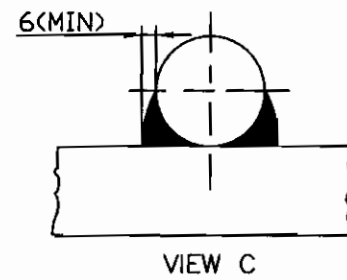
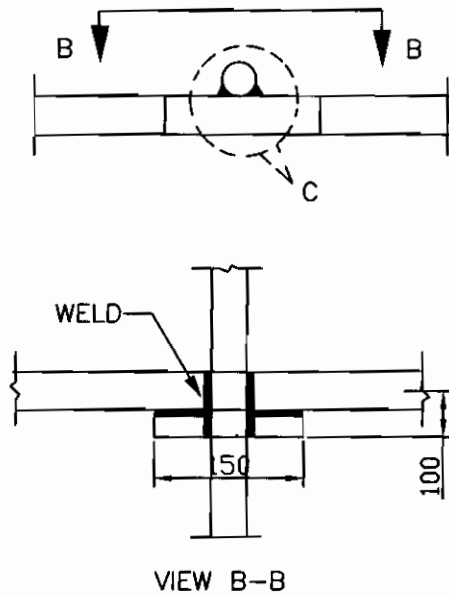
EQUIPMENT EARTHING DETAILS

ROD EARTH ELECTRODE WITHOUT TEST LINK

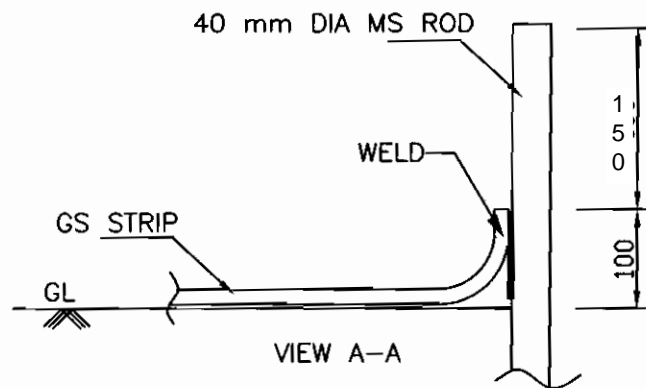
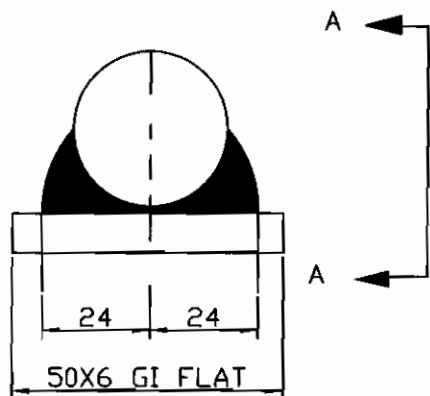
COMPU. DRG. REF.

DRG. No. TB-STD-316-ROD ELECTRODE W/O PIT

2. RIGHT ANGLED JOINT



3. ROD TO STRIP



EQUIPMENT & STRUCTURE EARTHING DETAILS WELDING DETAILS - II

COMPUTER REF. NO.

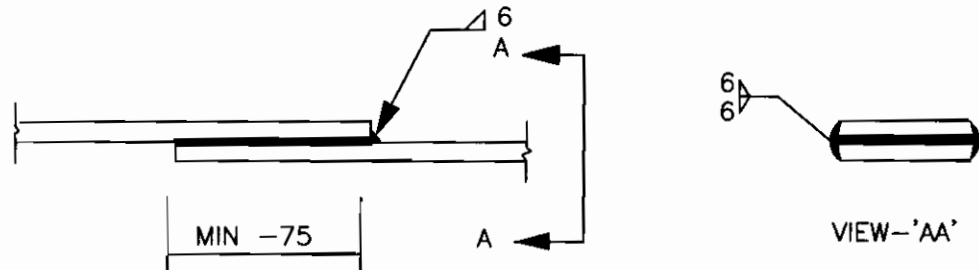
DRG. No.

TB-STD-316-ROD WELDING

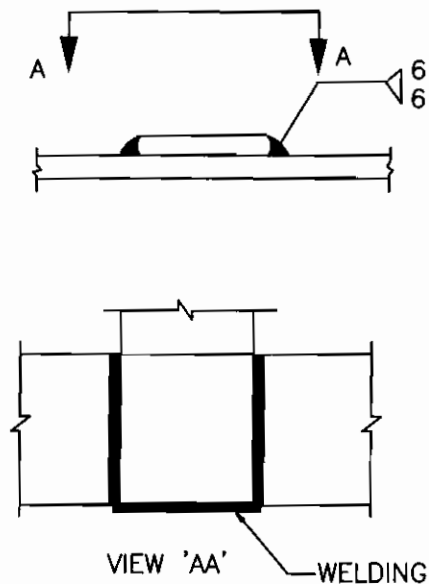
REV. 00

A. STRIP TO STRIP (50X6 MS FLAT)

1. STRAIGHT LAP JOINT/RISER



2. CROSS LAP JOINT



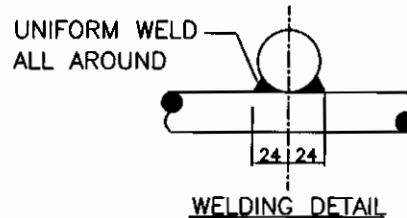
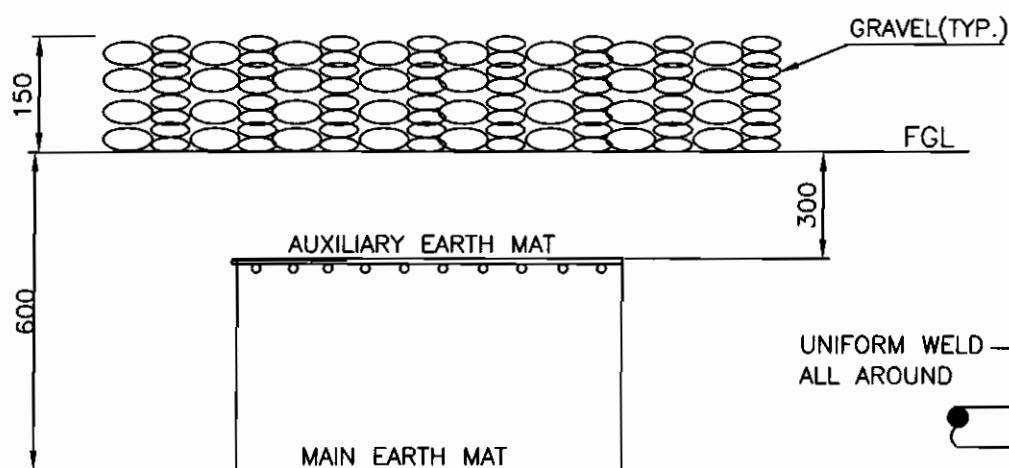
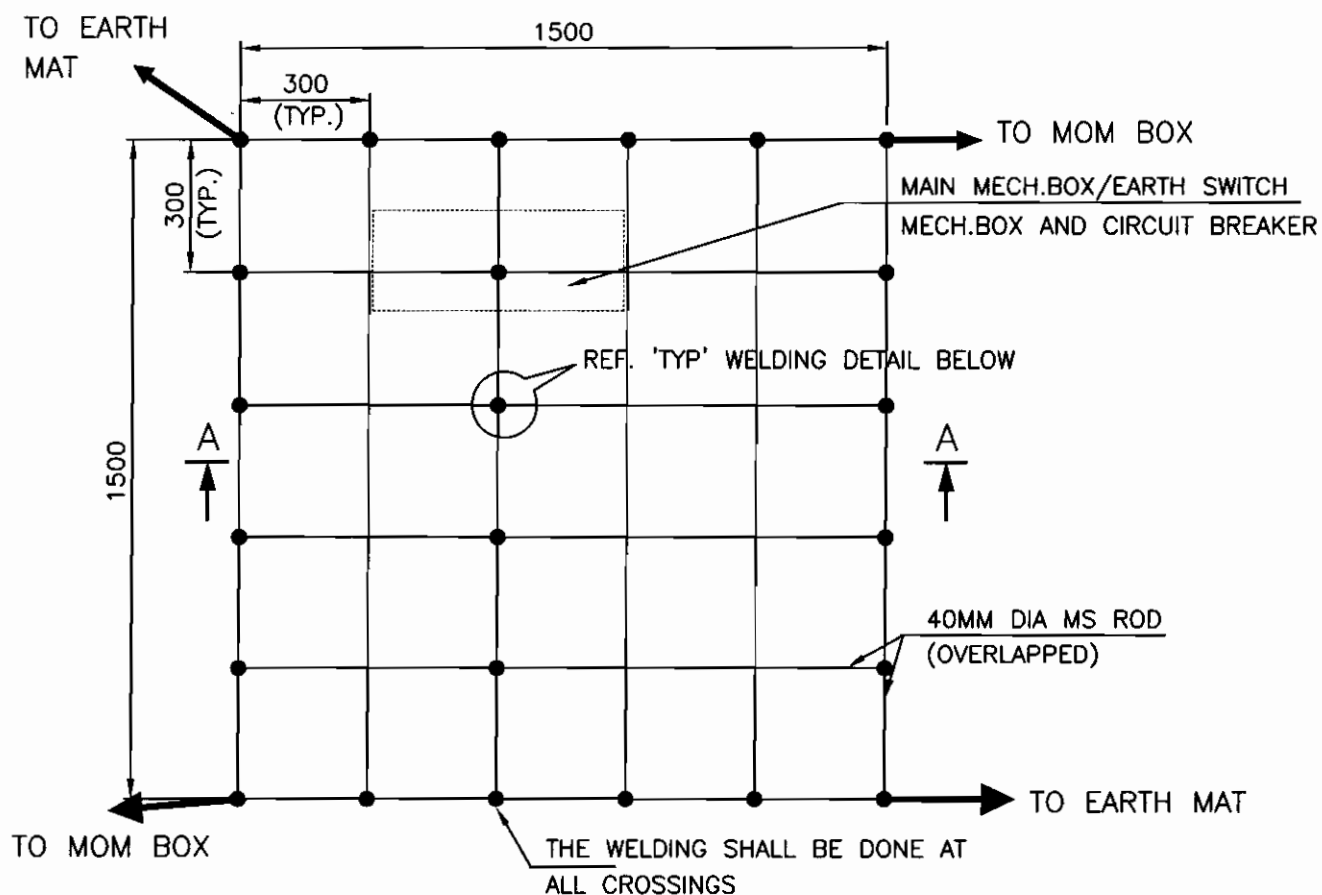
EQUIPMENT & STRUCTURE EARTHING DETAILS WELDING DETAILS - I

COMPUTERREF.NO.

DRG. No.

TB-STD-316-ROD WELDING

REV. 00



SECTION AA

NOTE:

AUX. EARTH MAT SHALL BE SO POSITIONED THAT THE FOOT OF THE OPERATOR ALWAYS LIE OVER THE AUX. EARTH MAT AREA WHILE ATTENDING / OPERATING THE MECH. BOX. THE CABLE TRENCH ROUTING SHALL BE PLANNED ACCORDINGLY.

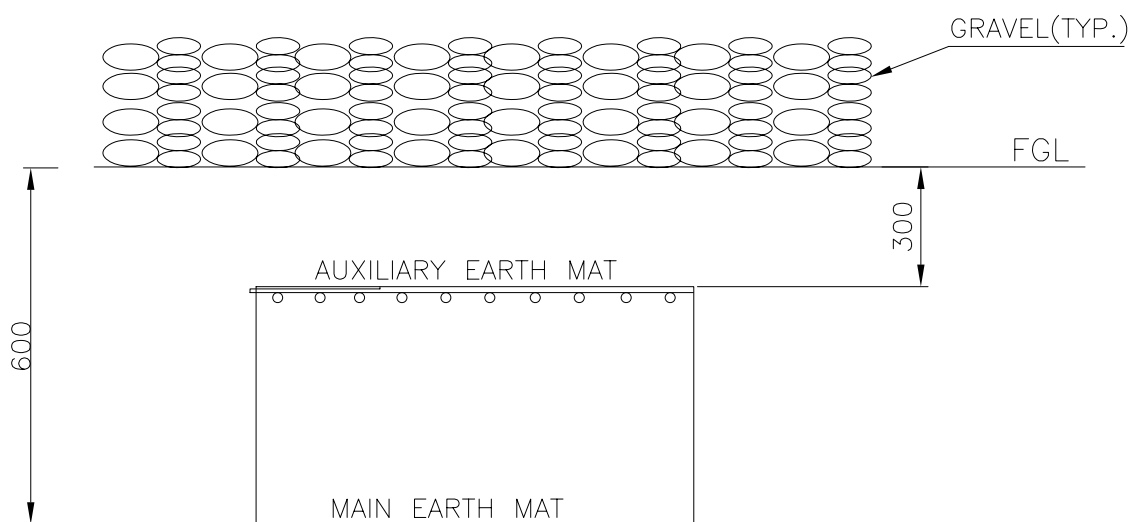
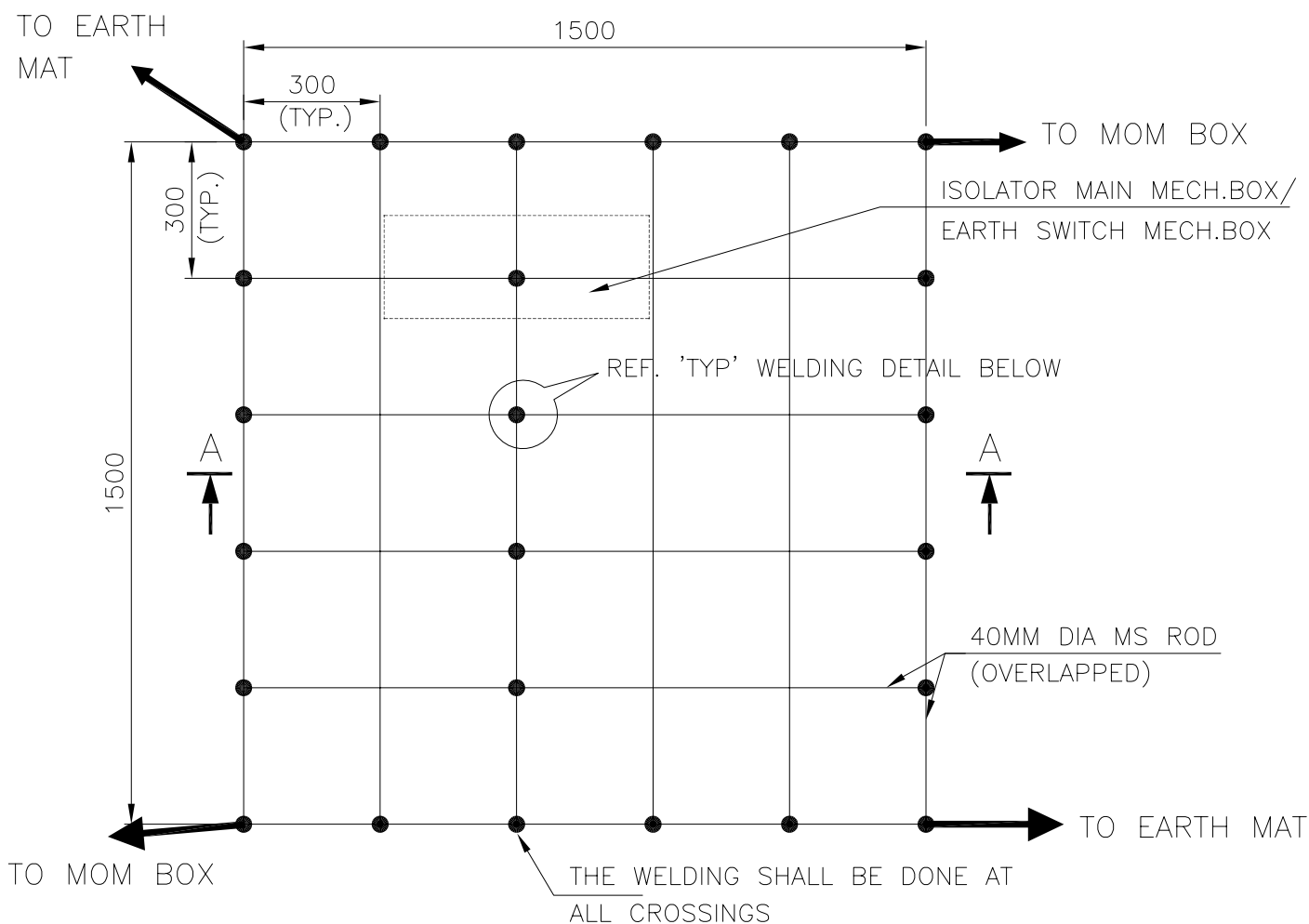


EQUIPMENT & STRUCTURE EARTHING DETAILS
AUXILIARY EARTH MAT FOR ISOLATOR MAIN MECH., E/S
MECH. BOX & CB (TYP.)

COMPU. DRG. REF.

Report No.

TB-STD-316-AUX. MAT



SECTION AA

NOTE:

AUX. EARTH MAT SHALL BE SO POSITIONED THAT THE FOOT OF THE OPERATOR ALWAYS LIE OVER THE AUX. EARTH MAT AREA WHILE ATTENDING / OPERATING THE MECH. BOX THE CABLE TRENCH ROUTING SHALL BE PLANNED ACCORDINGLY.



COMPU. DRG. REF.

Report No.

EQUIPMENT EARTHING DETAILS

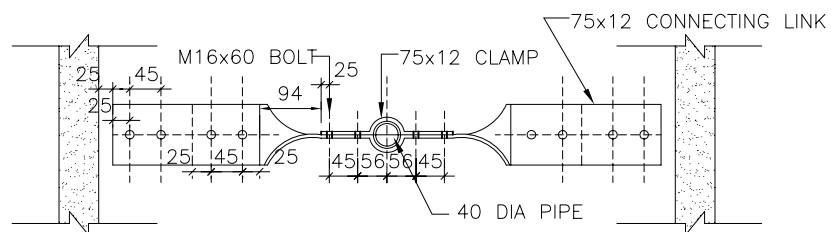
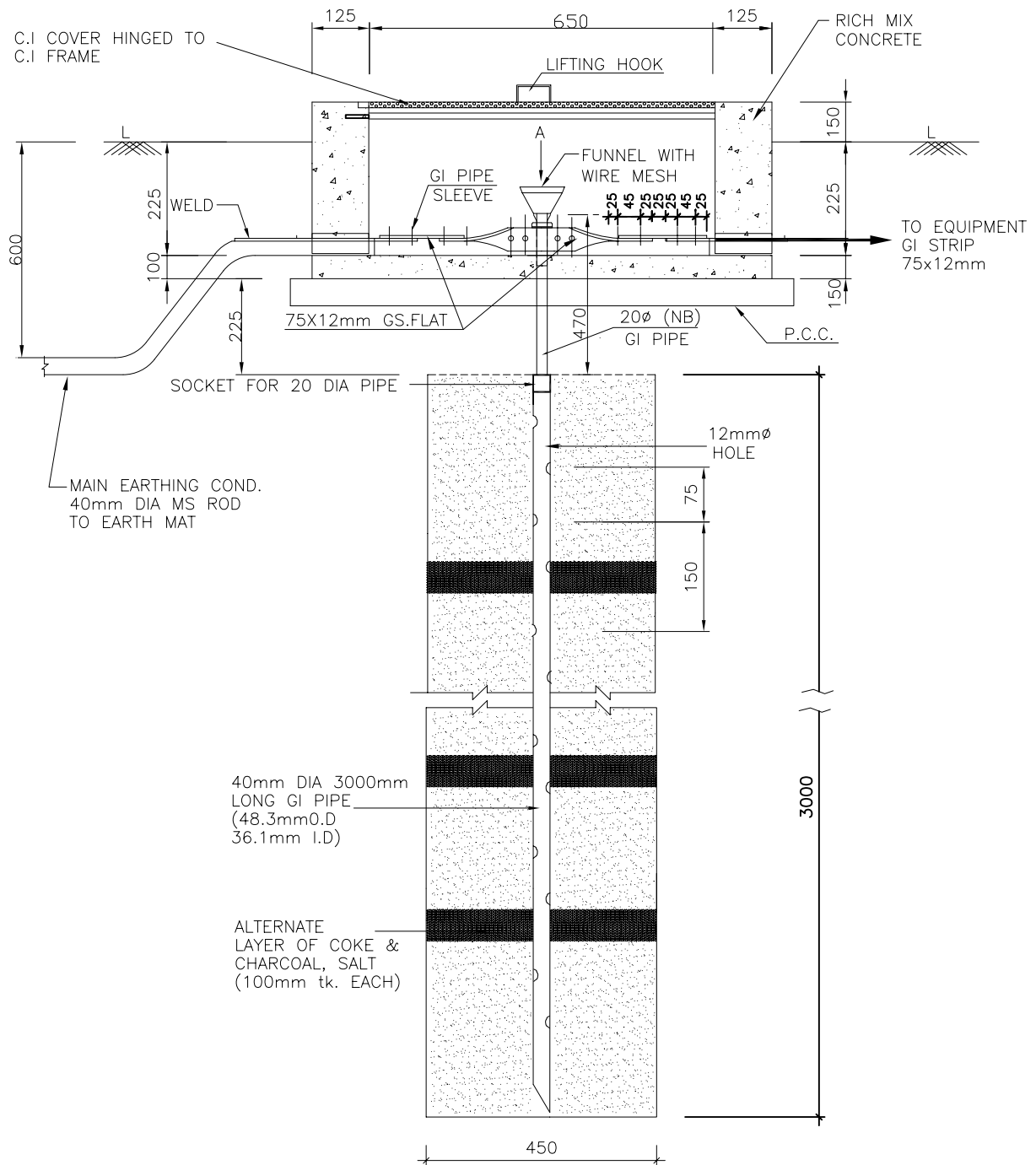
AUXILIARY EARTH MAT FOR ISOLATOR MAIN MECH., E/S
MECH. BOX

TB-4-345-316-007

REV. 00

SHEET No.

14



VIEW-A

NOTE:

1. ALL NUTS,BOLTS AND WASHERS, FUNNEL GI PIPE AND WIRE MESH SHALL BE GALVANISED AS PER SPECIFICATION.
2. FUNNEL SHALL BE SECURELY HELD TO THE PIPE.
3. TO BE USED FOR CONNECTING TO NEUTRAL OF POWER TRANSFORMER/REACTOR/NGR

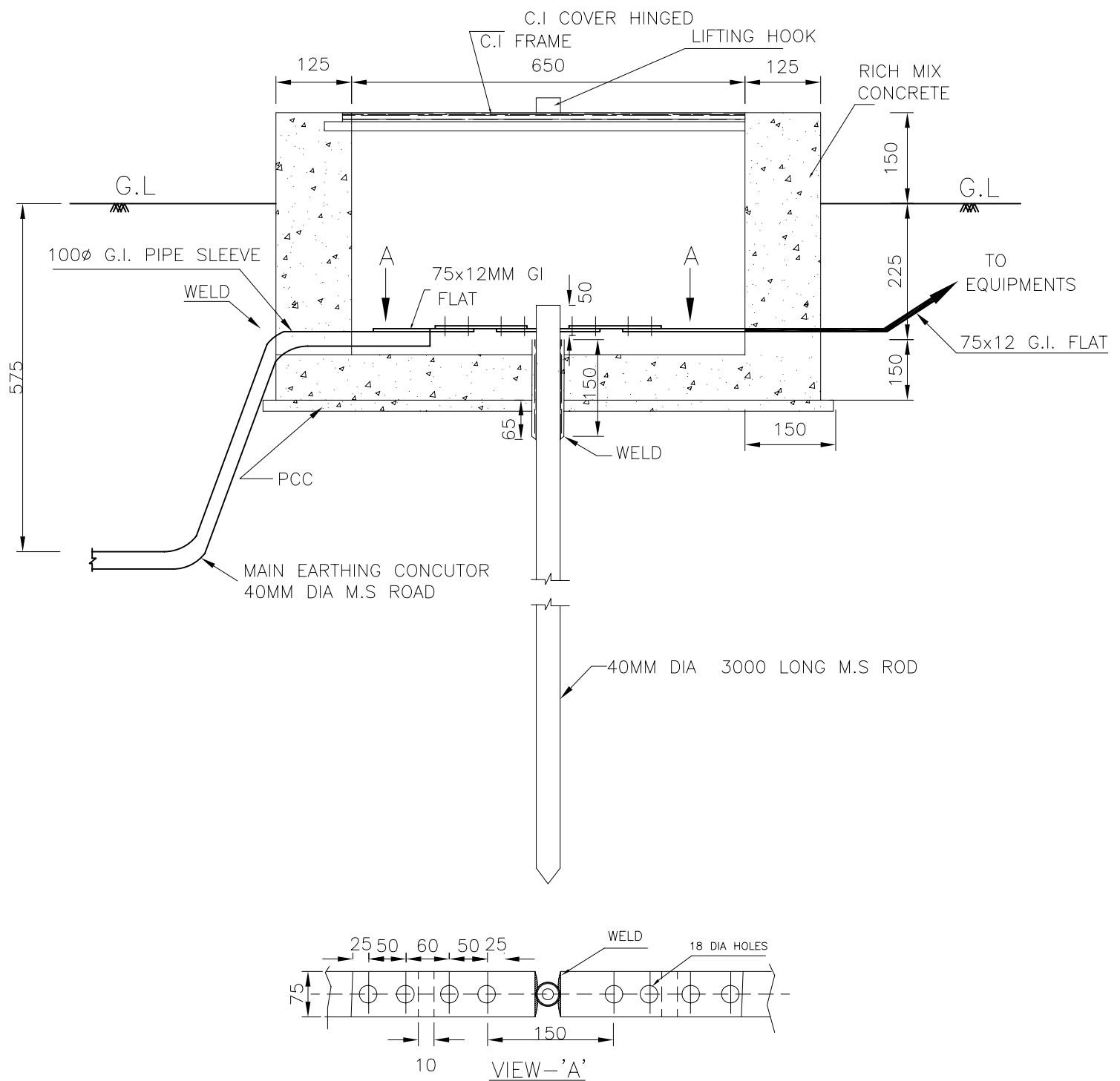


EQUIPMENT EARTHING DETAILS
DETAILS OF PIPE EARTH ELECTRODE
IN TREATED EARTH PIT (ET)

COMPUTERREF.NO.

DRG. No.

TB-STD-316-PIPE ELECTORDE REV. 00



NOTE:-

1. TO BE USED FOR CONNECTING DOWN CONDUCTOR OF LIGHTNING PROTECTION SYSTEM.



EQUIPMENT EARTHING DETAILS

ROD EARTH ELECTRODE WITH TEST LINK

COMPU. DRG. REF.

DRG. No.

TB-STD-316-ROD ELECTRODE WITH PIT